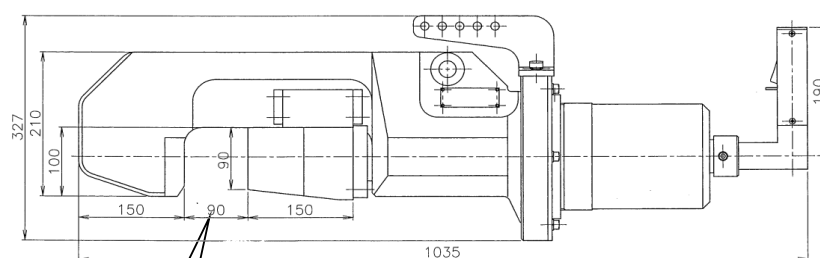
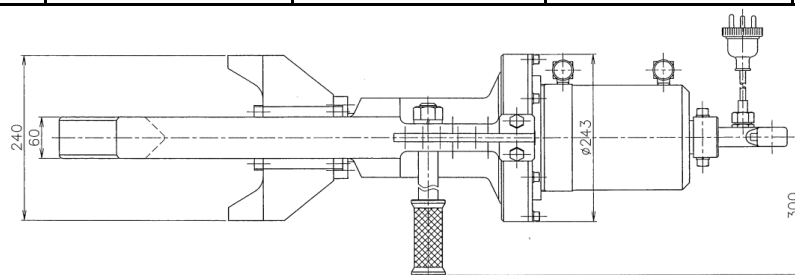


# Snap Breaker SBH-3

## ◆ Specifications

Model	Full Length mm	Weight kg	Cylinder Output kN	Clearance (A) mm
SBH-3	1035	120	730	90



## ◆ Applications

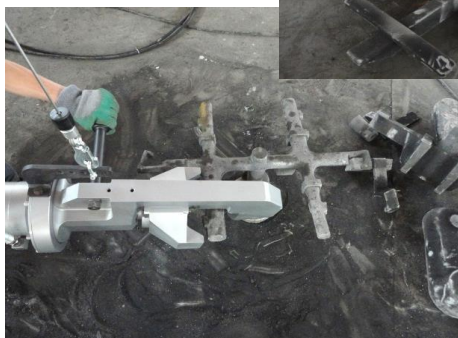
Snap Breaker is developed to break down lengthy runners into small pieces so that furnace can melt these efficiently.

By using this Snap Breaker, you can offload heavy labor, noise, and ineffectiveness of grinding and gas cutting.



## ◆ Features

- Maximum breakable cross-section:  
FC200 =  $\phi$  88 mm  
FCD450 =  $\phi$  80 mm
- This machine has high breaking power and mobile operability, and suitable to large size applications



2013.11.20



\* Specifications may change without any notice for product improvement.