

Runner Crusher HRC-

◆ Specifications

(Large Scale Curuching Machine for Casting Industry)

Model	Demensions L×W×H (mm)	Weight (kg)	Working Oil Pressure	Inlet Size (mm)	Capacity (kg/h)	Description
HRC-2	2666×1264×1950	7,700	22MPa	810×710	7,660	Two Cylinders Model
HRC-2A	3290×1452×2980	14,000		1000×870	15,500	Two Cylinders Model
HRC-3A	3290×1882×2980	18,000		1000×1300	16,200	Three Cylinders Model
HM-4000	1130×1168×1468	950				Pump only for HRC-2

◆ Purpose of Use

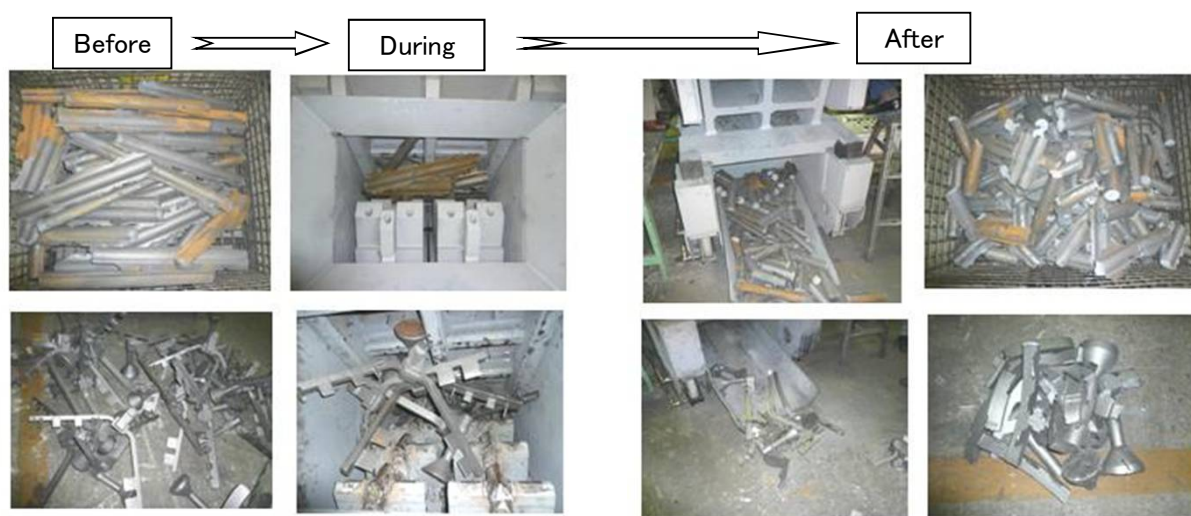
In casting production, raisers and runners must be broken down into smaller pieces for maximum furnace efficiency. The Runner Crusher makes this breaking task very fast and easy.

◆ Features

- Developed special system (special blade, two separate jaws etc.) enhanced crushing efficiency.
- Waste materials are broken into smaller pieces and enhance furnace efficiency.
(Large reduction in electricity consumption)
- Production capacity can be drastically increased by mechanization.
- Dangerous tasks, heavy tasks, and dirty tasks can be done by the machines.
- Recycling materials and reducing electrocity consumption contribute to the protection of the environment.

[Runner Crusher HRC-2]

[Hydraulic Pump HM-4000]



2012.1.17

* Specifications may change without any notice for product improvement.